

---

# ***Designer Series Development System***

## *Conversion Guide*



Windows® Environments

---

## **Actel Corporation, Sunnyvale, CA 94086**

© 1999 Actel Corporation. All rights reserved.

Printed in the United States of America

Part Number: 5579010-1

Release: April 1999

No part of this document may be copied or reproduced in any form or by any means without prior written consent of Actel.

Actel makes no warranties with respect to this documentation and disclaims any implied warranties of merchantability or fitness for a particular purpose.

Information in this document is subject to change without notice. Actel assumes no responsibility for any errors that may appear in this document.

This document contains confidential proprietary information that is not to be disclosed to any unauthorized person without prior written consent of Actel Corporation.

### **Trademarks**

Actel, the Actel logotype, Action Logic, Activator, and Actionprobe are registered trademarks of Actel Corporation.

Acrobat Reader is a trademark of Adobe Systems, Inc.

Windows is a registered trademark of Microsoft in the U.S. and other countries.

All other products or brand names mentioned are trademarks or registered trademarks of their respective holders.

---

# Table of Contents

Introduction	v
Difference Between Designer Versions	v
ObjectStore Software	v
<b>1 Converting Designs</b>	<b>7</b>
3.0 and 3.1 Designs	7
Pre-3.0 Designs	7
<b>2 Installing ObjectStore</b>	<b>9</b>
Installation	9
<b>3 Setting Environment Variables</b>	<b>13</b>
Windows 95	13
Windows NT	13
Environment Variables	13
<b>4 Troubleshooting</b>	<b>15</b>
ADB Could Not be Opened	15
Authentication Failed	15
DLL Not Found	16
Insufficient Memory	16
Miscellaneous ObjectStore Error	17
ObjectStore Will Not Start	18
ObjectStore Panic	19
ODI_SERVER_DIR 'F:\TEMP' Does Not Exist	19
Ostore Cache Manager does not initialize	19
Program Performed an Illegal Operation	20
Server Not Responding	20
<b>5 Removing ObjectStore</b>	<b>23</b>
Removing ObjectStore	23
<b>A Product Support</b>	<b>25</b>

---

*Table of Contents*

Actel U.S. Toll-Free Line . . . . .	25
Customer Service . . . . .	25
Customer Applications Center . . . . .	26
Guru Automated Technical Support . . . . .	26
Web Site . . . . .	26
FTP Site. . . . .	27
Electronic Mail . . . . .	27
Worldwide Sales Offices . . . . .	28
<a href="#">Index</a> . . . . .	29

---

# Introduction

This manual describes how to convert designs created with Designer versions 3.1 and earlier to the format used by the current version of Designer.

- If you do not need to convert designs created in Designer versions 3.1 or earlier, ***you do not need this manual, and you do not need to install ObjectStore.***
- If you need to convert designs created in Designer versions 3.0 or 3.1, and have not deleted ObjectStore software from your previous installation of Designer, ***you do not need to re-install ObjectStore, and can proceed directly to “Converting Designs” on page 7.***
- If you need to convert designs created in Designer versions 3.0 or 3.1, and do not have ObjectStore software installed, ***you need to re-install ObjectStore as described in “Installing ObjectStore” on page 9.***
- If you need to convert designs created with pre-3.0 versions of Designer, ***you do not need ObjectStore software, and can proceed directly to “Converting Designs” on page 7.***

## Difference Between Designer Versions

Designer no longer uses the ObjectStore database software. Designer versions 3.0 and 3.1 used ObjectStore to maintain design integrity and design data. Designer now uses an internal database to maintain design integrity and design data.

Designs created in pre-3.0 versions of Designer did not use ObjectStore software, and do not require ObjectStore for conversion to the current version of Designer.

## ObjectStore Software

ObjectStore software is required to convert previous versions of ADB (Actel Database) files created in Designer 3.0 and 3.1. If you have deleted ObjectStore and want to convert designs created with Designer 3.0 or 3.1, you must reinstall ObjectStore before design conversion. See “Installing ObjectStore” on page 9. After your old design files have been converted, you may remove ObjectStore, as described in “Removing ObjectStore” on page 23.



---

# Converting Designs

This chapter describes how to convert designs created in Designer versions 3.1 and earlier to the current version of Designer.

You should convert all designs to the new format. Software updates will be available only for the latest version of Designer.

## *3.0 and 3.1 Designs*

To convert designs from Designer versions 3.0 and 3.1, open the old ADB file with the current version of Designer, and save. Once Designer 3.0 and 3.1 designs have been converted, they are no longer compatible with previous versions of Designer.

**Note:** Designs created with Designer 3.0 and 3.1 require ObjectStore for conversion to the current version of Designer. If you have deleted ObjectStore and need to install it, refer to “Installing ObjectStore” on page 9.

## *Pre-3.0 Designs*

To convert pre-3.0 designs, open the ALS file in the current version of Designer, and save. Pre-3.0 designs are converted to the current version of Designer. Pre-3.0 ALS files are not deleted.

**Note:** Pre-3.0 designs do not require ObjectStore for conversion.





---

## Installing ObjectStore

This chapter guides you through the installation procedure for ObjectStore software on Windows 95 and Windows NT.

Designer 3.0 and 3.1 used the ObjectStore database scheme to keep track of design data. The current version of Designer uses a proprietary database scheme that eliminates the need for ObjectStore.

ObjectStore must be installed to convert 3.0 and 3.1 designs to be compatible with the current version of Designer. Once all designs have been converted, ObjectStore can be removed, as described in “Removing ObjectStore” on page 23.

### Installation

Perform the following steps to install ObjectStore:

- 1. Insert the Designer Series CD into your CD-ROM drive.**
- 2. Launch the Ostore install program.** Select the Run command from the Start menu and type the following command:

```
d:\ostore\install.exe
```

You can also install OobjectStore by viewing the contents of the “ostore” directory on the CD-ROM using Windows Explorer, and double-clicking the install.exe icon.

3. Follow the prompts, create a directory named “ostore” in the Installation Options dialog box, as shown in Figure 2-1, and click OK.

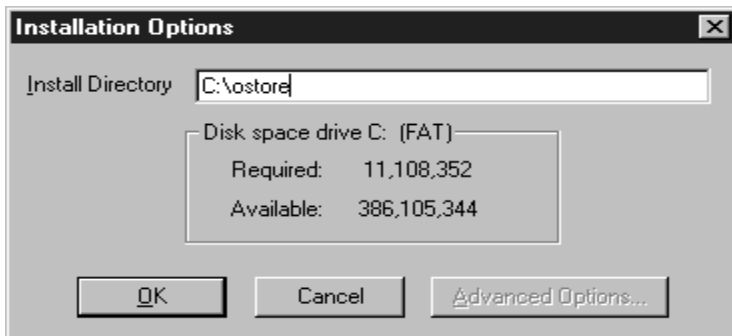


Figure 2-1. Installation Options Dialog Box

4. In the ObjectStore Setup window, check the Auto Start Server check box, then click Initialize Server, as shown in Figure 2-2.

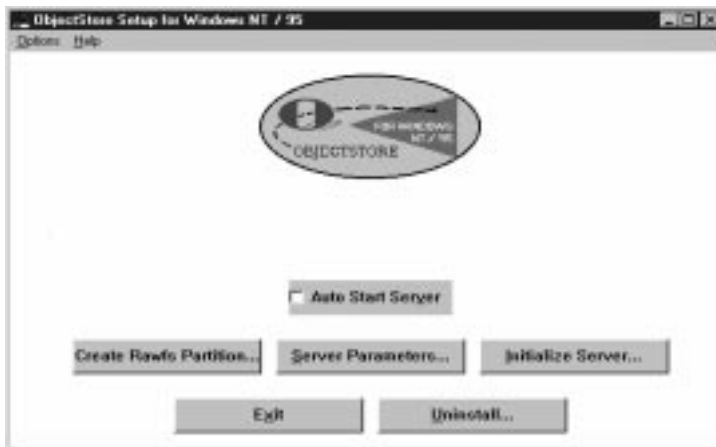


Figure 2-2. ObjectStore Setup Window

5. **Create a log file named “ostore/ostrx.log” in the Server Initialization dialog box, as shown in Figure 2-3.**



Figure 2-3. Server Initialization Dialog Box

6. **Click Initialize Server from the Initializing Server for File Databases dialog box, as shown in Figure 2-4.**

**Note:** Do not select Create Rawfs Partition from the ObjectStore Setup Window.

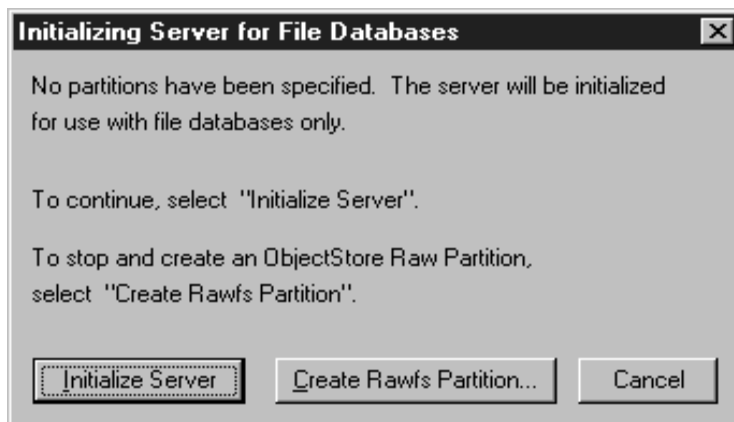


Figure 2-4. Initializing Server for File Databases Dialog Box

7. **When ObjectStore initialization is complete, exit ObjectStore setup and re-boot your system.**



---

## Setting Environment Variables

This chapter describes how to set environment variables for ObjectStore. Environment variables must be set in Windows 95, and Windows NT, and are listed in “Environment Variables” on page 13.

### Windows 95

Environment variables are set in the autoexec.bat file.

### Windows NT

Environment variables are set as follows:

1. **Click the Start button, select Settings, and then click Control Panel.**
2. **In the Control Panel icon group, double-click the System icon.**
3. **Click the Environment tab in the System Properties window.**
4. **Set the environment variables, and then click OK.**

### Environment Variables

**OS\_ROOTDIR:** This variable specifies a directory where ObjectStore is installed. For example:

```
set OS_ROOTDIR = C:\OSTORE
```

**ODI\_SERVER\_DIR:** This variable specifies a directory where ObjectStore can keep temporary files. This directory, which must exist on a local drive, defaults to the Windows temporary directory. For example:

```
set ODI_SERVER_DIR = C:\WINDOWS\TEMP
```

**OS\_LOCAL\_HOST:** This variable is the network name of the PC. The installation tool detects the PC name and sets this variable accordingly.

If neither the network nor a network name is detected, the variable is set to LOCAL\_HOST. If you are not running on a network, make sure this variable is set to LOCAL\_HOST. For example:

```
set OS_LOCAL_HOST = <LOCAL_HOST>
```

**Note:** If you are using Windows NT, you must have the networking software installed, or set OS\_AUTH = 12.

---

## Troubleshooting

This chapter describes potential problems encountered during installation of ObjectStore, and descriptions of how to correct the problems.

### *ADB Could Not be Opened*

The following error message may appear when converting a design from Designer version 3.1 or 3.0 if the conversion utility fails to recognize which version of Designer created the design. (This usually occurs with designs that were created with a beta version of Designer 3.1 or with designs which were converted to Designer 3.1 from Designer 3.0):

```
"<design>.adb" could not be opened, CvdbConvert returned
error: "<AdbSYS_Cannot_Convert_CvdbConvert_Failed:
AdbDesign:OpenDesign failed: CvdbConvert Failed, Error
Code: Cvdb_Rv_Cannot_Determine_Adb_Ver>".
```

To correct this problem, force Designer to recognize the design as version 3.1 select the Run command from the Start menu and type the following command::

```
designer cvdb_force_version:adb_31
```

If Designer returns the same error message, type the following command:

```
designer cvdb_force_version:adb_30
```

### *Authentication Failed*

The following error message appears under Windows NT for certain network configurations.

```
Authentication failed
```

To correct this problem, set OS\_AUTH=12 in your system environment variables. Select the control panel followed by your system icon to set the system variables.

## DLL Not Found

The following error message appears when ObjectStore cannot find needed DLL files:

```
O4CLIEN1.DLL not found
```

To correct this problem, verify that the path statement is set correctly. The number of characters on the path must be less than 127, and the path must include %OS\_ROOTDIR%\bin.

In Windows 95, this path can be verified by typing the following in the MS-DOS PROMPT:

```
path
```

In Windows NT, the path can be verified in Systems Environment located in the Control Panel.

## Insufficient Memory

The following error message appears when the available conventional memory is less than 500 KB (the DOS command “mem” displays how much conventional memory is available). Designer will not run without 500 KB of available conventional memory.

```
Insufficient memory
```



To correct this problem, disable the Cache Manager. If you disable the Cache Manager, you cannot run more than one ObjectStore client application (Designer, APSW) at a time. To disable the Cache Manager, set the following variables:

```
Set OS_NETWORK = O3NETNSM.DLL
Set OS_DISABLE_CACHE_MANAGER = 1
```

## Miscellaneous ObjectStore Error

The following are possible miscellaneous ObjectStore errors:

### **Environment Variable Must Be Set**

The following error message appears when the environment variable OS\_LOCAL\_HOST is not set or is set incorrectly in the autoexec.bat file:

```
Miscellaneous ObjectStore error. Either [Network] Computername in System.ini or the OS_LOCAL_HOST environment variable must be set [err-misc].
```

To correct this problem set the environment variable to either the name of the PC on the network or LOCAL\_HOST (see “Setting Environment Variables” on page 13).

### **File OS32S.INI Could Not Be Found**

The following error message appears when the os32s.ini file is missing or corrupted:

```
Miscellaneous ObjectStore error
The file c:\WIN3.1\OS32S.INI could not be found
[err_misc]
```

To correct this problem, install the os32s.ini file into the correct directory by reinstalling the Designer Series software.

## ObjectStore Will Not Start

If Designer software will not start, check for the following conditions:

### Windows 95

If ObjectStore fails to start, there can be several causes. Look at the `osserver.txt` file inside your temporary directory, specified by the `ODI_SERVER_DIR` environment variable, for any relevant error messages. The following are some of the reasons the ObjectStore server would fail to start:

1. Not enough conventional memory. You need at least 500 KB of conventional memory to run the ObjectStore server.
2. The “Designer Init” program has not been run. If the “Designer Init” program exists in your Designer Series 3.1 program group or your Startup program group. To correct this problem, start the program group, then execute this program and restart the Designer software.
3. The ObjectStore transaction log file has been deleted. To correct this problem, re-create this file by running “actinit,” located in the “%ALSDIR%\bin” directory.

### Windows NT

If ObjectStore fails to start, enter the following command at the DOS prompt:

```
osserver -con -i
```

The following message will then appear on the screen:

```
You have asked for initialization which will create a new transaction log, deleting any old log that may exist, thus destroying any recovery data in the old log. This may leave some file databases in the broken state. Are you sure that you want to create a new log? (yes/no):
```

Type “yes.” Then, in the Control Panel, click on the Services icon, and start the ObjectStore Server.

## *ObjectStore Panic*

The following error message appears if the ObjectStore server is not initialized (the server is initialized during the installation process):

ObjectStore Panic

To correct this problem, select the “Designer Init” icon from the Designer Series program group. If you cannot initialize the ObjectStore server because the ObjectStore Panic error persists, check the available conventional memory. You must have a minimum of 500 KB of free conventional memory.

## *ODI\_SERVER\_DIR 'F:\TEMP' Does Not Exist*

ObjectStore does not support network drives. The following error message appears when 'F' is a network drive:

ERROR: ODI\_SERVER\_DIR'F:\TEMP' does not exist.

To correct this problem, set the environment variable ODI\_SERVER\_DIR to a local drive. Under Windows 95, set ODI\_SERVER\_DIR to a local drive in the autoexec.bat file. Under Windows NT, set ODI\_SERVER\_DIR in the system setup.

## *Ostore Cache Manager does not initialize*

If Ostore Cache Manager does not initialize, make sure that you have enough conventional memory (see “Insufficient memory” on page 16).

Check the “%ODI\_SERVER\_DIR%\oscmgr3.txt” file for messages about network sockets failure. If these messages are present, set the `os_network` variable to `o3netnsm` as follows:

```
OS_NETWORK=o3netnsm
```

## Program Performed an Illegal Operation

The following error message appears when there is a computer memory problem:

```
Osserver
This program performed an illegal operation and will be
shut down.
If the problem persists, contact the program vendor.
```

To correct this problem, start the Designer software. If the error message appears again, reboot the computer and restart the Designer Series software.

## Server Not Responding

The following error appears when the environment variable `OS_ROOTDIR` is not set or set incorrectly in the `autoexec.bat` file.

```
Server not responding. Please restart it.
The specified network host name could not be resolved to
an address. No address for host actel-oss-host on any con-
nected network;
the following errors were noted at init time:
C:\actel\bin\osnettcp.dll:The TCP host name differs from
this computer's host name. ObjectsStore will be unable to
use OSNETTCP until this is corrected.
C:\actel\bin\O3NETBIO.DLL:NETBIOS not loaded.
[err_network]
[err_no_such_host].
```

To correct this problem, make sure that the environmental variable OS\_ROOTDIR is set in the autoexec.bat file. The variable should read OS\_ROOTDIR=C:\OSTORE (assuming \OSTORE is the installation directory). See “Setting Environment Variables” on page 13.



---

## *Removing ObjectStore*

This chapter describes how to permanently remove ObjectStore software from your computer once all Designer version 3.1 and 3.0 designs have been converted to be compatible with the current version of Designer.

### *Removing ObjectStore*

Perform the following steps to remove ObjectStore:

1. **Click the Start button, click Programs, click ObjecStore Win32, and double click on the ObjectStore Setup icon.**
2. **Click Uninstall in the ObjectStore Setup window.**
3. **Make desired selections in ObjectStore Uninstall Actions dialog box, and click OK.**
4. **Delete the OSTORE directory from your hard drive.**





---

## *Product Support*

Actel backs its products with various support services including Customer Service, a Customer Applications Center, a Web and FTP site, electronic mail, and worldwide sales offices. This appendix contains information about using these services and contacting Actel for service and support.

### *Actel U.S. Toll-Free Line*

Use the Actel toll-free line to contact Actel for sales information, technical support, requests for literature about Actel and Actel products, Customer Service, investor information, and using the Action Facts service.

The Actel Toll-Free Line is (888) 99-ACTEL.

### *Customer Service*

Contact Customer Service for non-technical product support, such as product pricing, product upgrades, update information, order status, and authorization.

From Northeast and North Central U.S.A., call (408) 522-4480.

From Southeast and Southwest U.S.A., call (408) 522-4480.

From South Central U.S.A., call (408) 522-4434.

From Northwest U.S.A., call (408) 522-4434.

From Canada, call (408) 522-4480.

From Europe, call (408) 522-4252 or +44 (0) 1256 305600.

From Japan, call (408) 522-4743.

From the rest of the world, call (408) 522-4743.

Fax, from anywhere in the world (408) 522-8044.

## Customer Applications Center

The Customer Applications Center is staffed by applications engineers who can answer your hardware, software, and design questions.

All calls are answered by our Technical Message Center. The center retrieves information, such as your name, company name, phone number and your question, and then issues a case number. The Center then forwards the information to a queue where the first available application engineer receives the data and returns your call. The phone hours are from 7:30 a.m. to 5 p.m., Pacific Standard Time, Monday through Friday.

The Customer Applications Center number is (800) 262-1060.

European customers can call +44 (0) 1256 305600.

## Guru Automated Technical Support

Guru is a Web based automated technical support system accessible through the Actel home page (<http://www.actel.com/guru/>). Guru provides answers to technical questions about Actel products. Many answers include diagrams, illustrations and links to other resources on the Actel Web site. Guru is available 24 hours a day, seven days a week.

## Web Site

Actel has a World Wide Web home page where you can browse a variety of technical and non-technical information. Use a Net browser (Netscape recommended) to access Actel's home page.

The URL is <http://www.actel.com>. You are welcome to share the resources we have provided on the net.

Be sure to visit the "Actel User Area" on our Web site, which contains information regarding: products, technical services, current manuals, and release notes.

## *FTP Site*

Actel has an anonymous FTP site located at **ftp://ftp.actel.com**. You can directly obtain library updates, software patches, design files, and data sheets.

## *Electronic Mail*

You can communicate your technical questions to our e-mail address and receive answers back by e-mail, fax, or phone. Also, if you have design problems, you can e-mail your design files to receive assistance. The e-mail account is monitored several times per day.

The technical support e-mail address is **tech@actel.com**.

## Worldwide Sales Offices

### Headquarters

Actel Corporation  
955 East Arques Avenue  
Sunnyvale, California 94086  
Toll Free: 888.99.ACTEL

Tel: 408.739.1010  
Fax: 408.739.1540

### US Sales Offices

#### California

Bay Area  
Tel: 408.328.2200  
Fax: 408.328.2358

Irvine  
Tel: 949.727.0470  
Fax: 949.727.0476

San Diego  
Tel: 619.938.9860  
Fax: 619.938.9887

Thousand Oaks  
Tel: 805.375.5769  
Fax: 805.375.5749

#### Colorado

Tel: 303.420.4335  
Fax: 303.420.4336

#### Florida

Tel: 407.677.6661  
Fax: 407.677.1030

#### Georgia

Tel: 770.831.9090  
Fax: 770.831.0055

#### Illinois

Tel: 847.259.1501  
Fax: 847.259.1572

#### Maryland

Tel: 410.381.3289  
Fax: 410.290.3291

#### Massachusetts

Tel: 978.244.3800  
Fax: 978.244.3820

#### Minnesota

Tel: 612.854.8162  
Fax: 612.854.8120

#### North Carolina

Tel: 919.376.5419  
Fax: 919.376.5421

#### Pennsylvania

Tel: 215.830.1458  
Fax: 215.706.0680

#### Texas

Tel: 972.235.8944  
Fax: 972.235.965

### International Sales Offices

#### Canada

Suite 203  
135 Michael Cowpland Dr,  
Kanata, Ontario K2M 2E9

Tel: 613.591.2074  
Fax: 613.591.0348

#### France

361 Avenue General de Gaulle  
92147 Clamart Cedex

Tel: +33 (0)1.40.83.11.00  
Fax: +33 (0)1.40.94.11.04

#### Germany

Bahnhofstrasse 15  
85375 Neufahrn

Tel: +49 (0)8165.9584.0  
Fax: +49 (0)8165.9584.1

#### Hong Kong

Suite 2206,  
Parkside Pacific Place,  
88 Queensway

Tel: +011.852.2877.6226  
Fax: +011.852.2918.9693

#### Italy

Via Giovanni da Udine No. 34  
20156 Milano

Tel: +39 (0)2.3809.3259  
Fax: +39 (0)2.3809.3260

#### Japan

EXOS Ebisu Building 4F  
1-24-14 Ebisu Shibuya-ku  
Tokyo 150

Tel: +81 (0)3.3445.7671  
Fax: +81 (0)3.3445.7668

#### Korea

135-090, 18th Floor,  
Kyoung AmBldg  
157-27 Samsung-dong  
Kangnam-ku, Seoul

Tel: +82 (0)2.555.7425  
Fax: +82 (0)2.555.5779

#### Taiwan

4F-3, No. 75, Sec. 1,  
Hsin-Tai-Wu Road,  
Hsi-chih, Taipei, 221

Tel: +886 (0)2.698.2525  
Fax: +886 (0)2.698.2548

#### United Kingdom

Daneshill House,  
Lutyens Close  
Basingstoke,  
Hampshire RG24 8AG

Tel: +44 (0)1256.305600  
Fax: +44 (0)1256.355420

---

# Index

## A

Actel  
FTP Site 27  
Web Based Technical Support 26  
Web Site 26

## C

Contacting Actel  
Customer Service 25  
Electronic Mail 27  
Technical Support 26  
Toll-Free 25  
Web Based Technical Support 26  
Converting  
3.0 and 3.1 Designs 7  
Pre-3.0 Designs 7  
Converting Databases 7  
Customer Service 25

## E

Electronic Mail 27  
Environment Variables Checklist 13  
Environmental Variables  
ODI\_SERVER\_DIR 13  
OS\_LOCAL\_HOST 13

## I

Installing ObjectStore 9  
Introduction v

## O

ObjectStore, Installing 9  
ObjectStore, Removing 23

## P

Product Support 25-??  
Customer Applications Center 26  
Customer Service 25  
Electronic Mail 27  
FTP Site 27  
Technical Support 26  
Toll-Free Line 25  
Web Site 26

## R

Removing ObjectStore 23

## T

Technical Support 26  
Toll-Free Line 25  
Troubleshooting 15

## W

Web Based Technical Support 26

